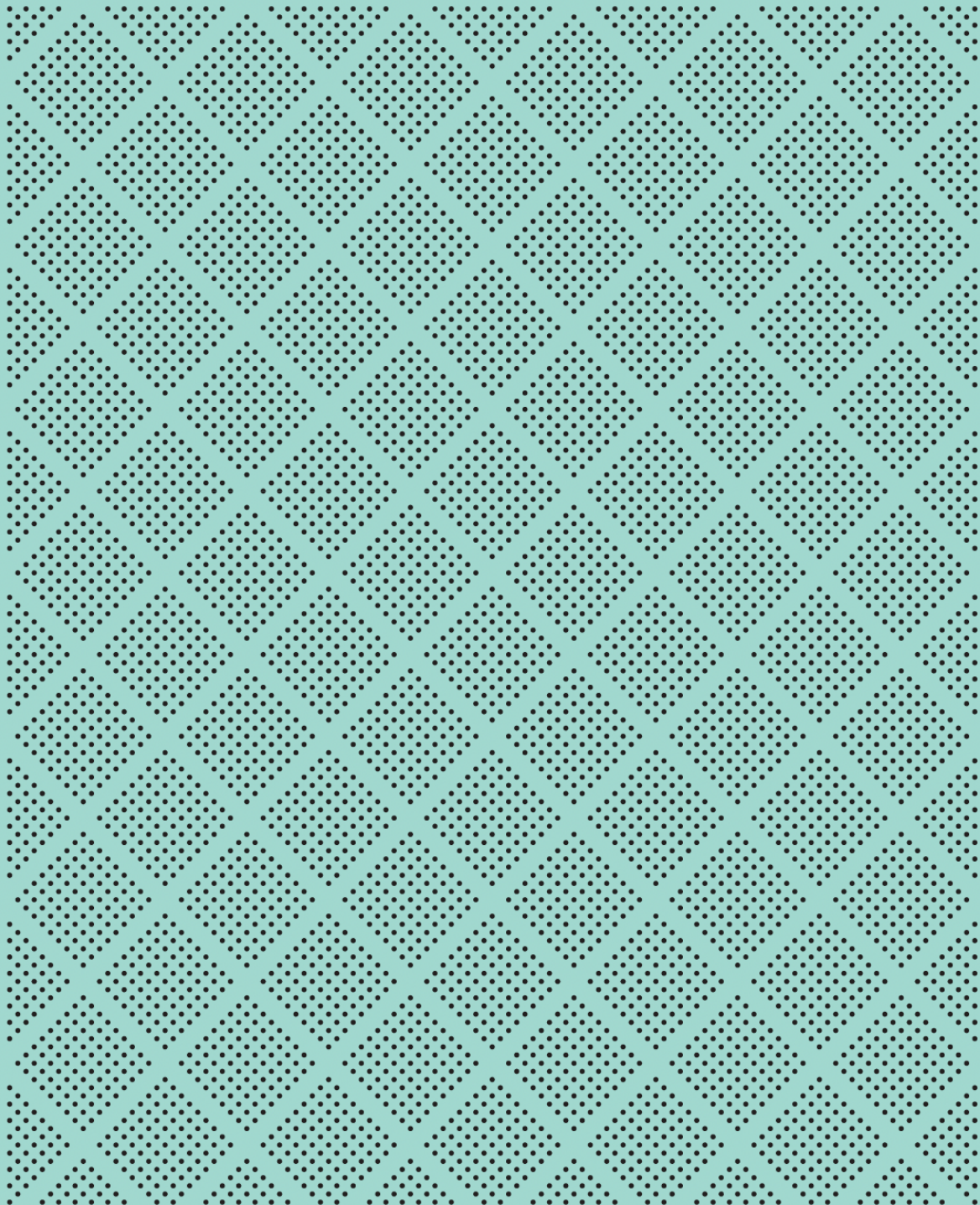


Monthly Fund Fact Sheets Diversified Funds



DIVERSIFIED FUNDS



Mint Diversified Income Fund

Investment Objective

This is a multi-asset class Fund that offers diversification by investing across a number of asset classes both in New Zealand and internationally. The objective of the Fund is to deliver a total return (through a combination of income and capital growth) in excess of the Consumers Price Index (CPI) by 3% per annum, before fees, over the medium to long term.

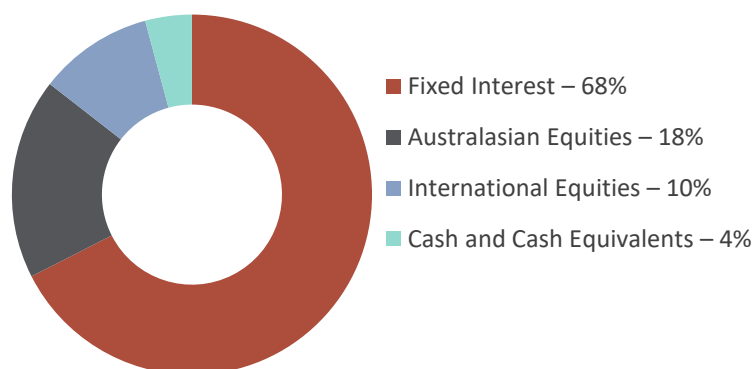
Performance

Rolling periods	1 month	3 months	1 Year	3 Years	5 Years	10 Years	Since inception
Mint Diversified Income Fund	-1.53%	-0.57%	4.11%	-0.11%	2.06%	n/a	3.57%
Composite Index*	-0.88%	1.02%	5.40%	-0.22%	2.30%	n/a	4.69%

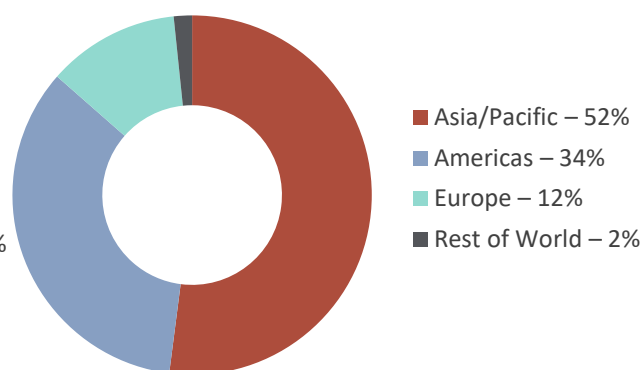
Calendar Years	YTD	2023	2022	2021	2020	2019	2018
Mint Diversified Income Fund	-0.53%	7.36%	-8.73%	2.73%	5.56%	8.05%	2.99%
Composite Index*	1.06%	7.96%	-8.96%	-0.54%	6.69%	11.88%	3.95%

Performance returns greater than 3 months are per annum. Returns are after fees and before investor tax. Net after tax performance can be found in the latest Quarterly Fund Update, available on our website. *Details on the makeup of the Composite Index can be found in the Statement of Investment Policy and Objectives which is available on our website.

Asset Exposures

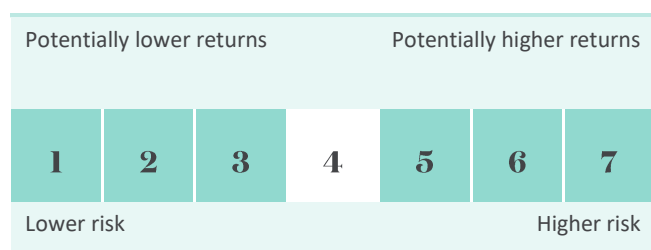


Geographic Diversification⁽¹⁾



(1) Based on the revenue exposure of all equity holdings

Latest Risk Indicator



Key Fund Facts

Date of Inception:	31 August 2014
Fund Size:	\$71 million
Unit Price:	\$1.0028
Typical Asset Mix:	30% Growth/ 70% Income
Benchmark:	Composite Index
Yield to Maturity:	5.76%
Latest FX Hedging:	101%
Total fund fee:	0.95%

10 Largest equity positions

Meridian Energy Limited	1.2%
Contact Energy Limited	1.2%
Infratil Limited	1.2%
Telix Pharmaceuticals Limited	1.0%
Fisher & Paykel Healthcare Corporation Limited	1.0%
Summerset Group Holdings Limited	1.0%
CSL Limited	1.0%
Skellerup Holdings Limited	0.9%
Auckland International Airport Limited	0.9%
Mainfreight Limited	0.9%

5 Largest bond issuers

Government of New Zealand	4.6%
Meridian Energy Limited	4.4%
Spark Finance Limited	4.1%
Auckland International Airport Limited	3.7%
Vector Limited	3.6%



Portfolio Manager, Marek Krzeczowski

MSc

Marek has over 16 years' experience in the investment sector focusing primarily on quantitative analysis, investment research and financial modelling. He arrived in New Zealand in 2016 from Edinburgh where he managed the Investment Research Team at Tcam Asset Management and was responsible for helping to formulate and implement the firm's investment strategy.

At Mint, Marek is the Portfolio Manager for the Multi-asset class funds. He is also responsible for Strategic and Tactical Asset Allocation.

DIVERSIFIED FUNDS



Mint Diversified Growth Fund

Investment Objective

This is a multi-asset class Fund that offers a diversified portfolio and aims to provide capital growth over the long term. The Fund invests primarily in New Zealand and international equities (including listed property if held) but will also hold cash and fixed interest securities. The objective of the Fund is to deliver returns in excess of the Consumers Price Index (CPI) by 4.5% per annum, before fees, over the medium to long term.

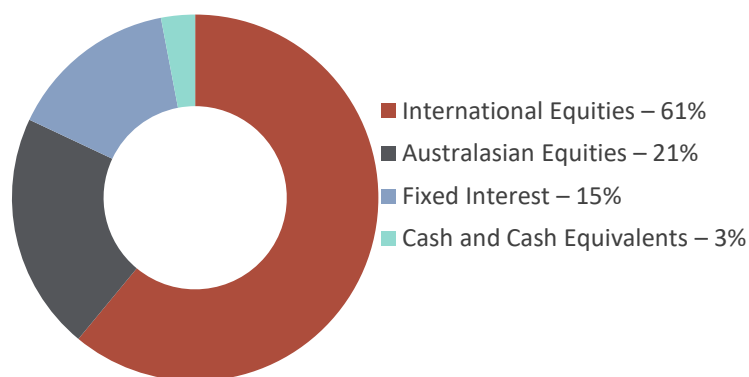
Performance

Rolling periods	1 month	3 months	1 Year	3 Years	5 Years	10 Years	Since inception
Mint Diversified Growth Fund	-3.25%	-0.09%	8.12%	1.30%	7.16%	n/a	7.77%
Composite Index*	-1.96%	3.51%	12.30%	2.55%	6.34%	n/a	7.87%

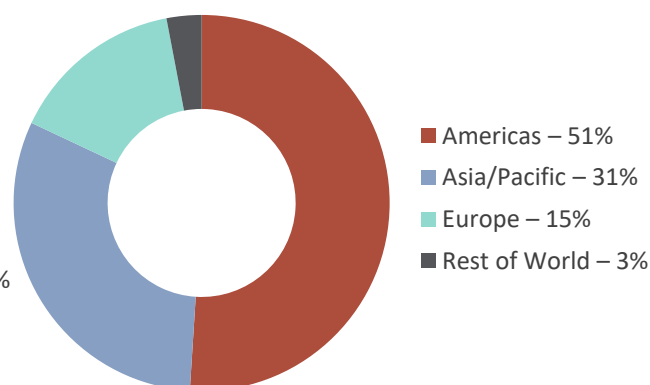
Calendar Years	YTD	2023	2022	2021	2020	2019	2018
Mint Diversified Growth Fund	1.82%	11.62%	-17.44%	17.64%	18.09%	15.02%	-0.16%
Composite Index*	4.25%	14.32%	-14.02%	10.79%	10.67%	21.85%	-1.76%

Performance returns greater than 3 months are per annum. Returns are after fees and before investor tax. Net after tax performance can be found in the latest Quarterly Fund Update, available on our website. *Details on the makeup of the Composite Index can be found in the Statement of Investment Policy and Objectives which is available on our website.

Asset Exposures

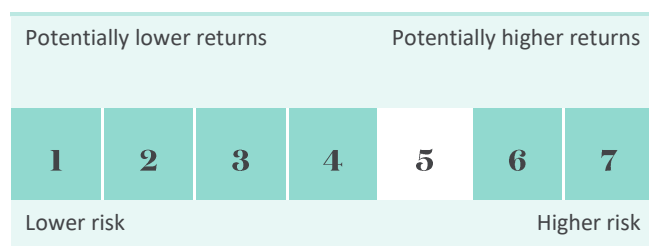


Geographic Diversification ⁽²⁾



(2) Based on the revenue exposure of all equity holdings

Latest Risk Indicator



Key Fund Facts

Date of Inception:	10 December 2018
Fund Size:	\$42 million
Unit Price:	\$1.4967
Typical Asset Mix:	80% Growth/20% Income
Benchmark:	Composite Index
Latest FX Hedging:	102%
Total fund fee:	1.18%

10 Largest equity positions

Thermo Fisher Scientific Inc.	1.9%
Martin Marietta Materials, Inc.	1.9%
Amazon.com, Inc.	1.8%
Boston Scientific Corporation	1.8%
Schneider Electric SE	1.7%
Visa Inc. Class A	1.7%
Novo Nordisk A/S Class B	1.7%
Microsoft Corporation	1.7%
Danaher Corporation	1.6%
Canadian National Railway Company	1.5%

5 Largest bond issuers

Port of Tauranga Limited	1.3%
Government of New Zealand	1.3%
Spark Finance Limited	1.3%
Meridian Energy Limited	1.2%
Kiwibank Limited	1.0%



Portfolio Manager, Marek Krzeczowski

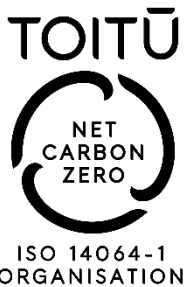
MSc

Marek has over 16 years' experience in the investment sector focusing primarily on quantitative analysis, investment research and financial modelling. He arrived in New Zealand in 2016 from Edinburgh where he managed the Investment Research Team at Tcam Asset Management and was responsible for helping to formulate and implement the firm's investment strategy.

At Mint, Marek is the Portfolio Manager for the Multi-asset class funds. He is also responsible for Strategic and Tactical Asset Allocation.

Responsible Investing

For additional information on our Responsible Investing activities, please refer to our website where you will find our Responsible Investing Policy, our Stewardship Policy, Proxy Voting Statistics and our Quarterly Sustainability Report: [Responsible Investing | Mint Asset Management](#)



STEWARDSHIP CODE
AOTEAROA NEW ZEALAND



For more information on our Funds, please contact:

Level 29, SAP Tower
151 Queen Street, Auckland
New Zealand

P 0800 646 833
E info@mintasset.co.nz
www.mintasset.co.nz